



BANSTEAD CONSERVATORS by David Hatcher (Conservators)

The Banstead Commons Conservators are individuals appointed by the Borough Council to manage 1300 acres (550 hectares) of common land around Banstead under the terms of an Act of parliament dating from 1893.

The conservators are grateful to every member of the public and local resident who can give up any of their spare time to help preserve the rare and vulnerable habitats for the benefit of the wildlife and plants that depend on them and for the enjoyment of people who use these valuable open spaces for outdoor recreation.

One of the most important forms of management is known as 'conservation grazing'. Closely cropped open chalk downland is an increasingly endangered habitat because of the changes in agricultural practices. Before the war, open areas that were unsuitable for arable use because of steep slopes or thin soils were grazed by sheep or, in their absence, by rabbits. So, for thousands of years, this type of 'natural management' allowed highly-specialised plants (and animals, such as skylarks and some types of insect and other creatures) to find a place to thrive. After the war, sheep and other grazers became less common on the Downs and scrub began to cover them and the special conditions were lost.



We aim to preserve what is left and restore some more areas by traditional management. So we are reintroducing sheep (for example) to Banstead Downs and Park Downs in September. And that is where you come in. We cannot afford professional shepherds, even if we could find them, so we rely on volunteer stock checkers to visit our sheep every day on a rota basis to make sure they are happy and healthy, have enough food and water and that their fences are secure etc. Some volunteers have been doing this for several years, and love getting to know the animals and their individual personalities and preferences but we also get new recruits each year. If you would like to take part, just call our clerk, Lucy on 07919 251 512 or email Clerk@bansteadcommonsconservators.co.uk. Lucy will organise any 'training' required – it takes about an hour!



STOP PRESS - CHRISTMAS

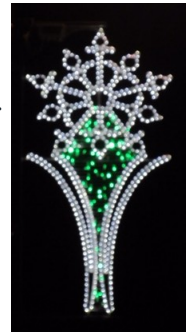
Sadly, the Banstead Business Guild has ceased to be and therefore, will **not** be putting on any festive lights or the Christmas Event that the village has enjoyed in the past.

It will be an even greater shame if Banstead is not able to put on any display of lights. Please see overleaf what we are doing and how you can help to save our lights.

WELCOME FROM THE CHAIR by David Talbot

Welcome to our autumn newsheet. I hope that you all enjoyed the summer weather and managed to get a break. The big news is all about Christmas - please see the articles below.

My thanks to all our contributors for their work and their articles especially from our colleagues at the Horticultural Society, the Flower Club, BviB, Plateau, Conservators and Rotary. Don't forget to check out our website - address on the front cover or if you have a smart phone, simply scan the QR code (the funny squiggle at the top of the front page) for more information. Please also see the appeals for help from ourselves, BViB and Rotary.



CHRISTMAS by Councillor Eddy Humphreys (Mayor)

It is with deepest regret that owing to lack of support, the committee of the Banstead Business Guild have agreed to disband. The main consequences of this is that Banstead will no longer have Christmas lights nor will we be able to have a Christmas event. However, the Rotary will still be supplying a Christmas tree with lights.

CHRISTMAS by Sally Hull and David Talbot

The potential impact on Christmas in Banstead, as a result of the Banstead Business Guild (BBG) closing down, is substantial. For a number of years, some dedicated members of the BBG organised the annual Christmas Event, which took place in the High Street during late November / early December. During this time, BBG also managed the festive lights, originally installed to celebrate the Millennium.

The Christmas Event will **not** now take place. However, I am sure you would join us in wanting to ensure that some of the High Street Festive Lights are still put up and turned on this year for some festive cheer.

To this end, we are investigating what can be achieved. At the time of going to press, we have launched a funding page: app.goodhub.com/banstead-village-xmas-lights-8873 please see our website for a link and please donate if you can. We are also exploring several other options to cover the high costs involved - please look out for any publicity. If you can offer any practical input, to light up our High Street please get in touch - let's keep Banstead's Christmas spirit alive.

CAN YOU LEND US YOUR ENTHUSIASM AND INPUT? by Sally Hull

It is great to have welcomed a number of enthusiastic new committee members over recent months, but BVRA is not yet back to full strength. We are keen to see more committee members of all ages, skills / experience, or even simply enthusiasm for the village, but would especially like to have more committee members with young families even if you cannot commit regularly. More committee members means we can be more effective and nobody is overburdened. We're a friendly and welcoming bunch who meet once a month (although not everyone can make every meeting) at the Banstead Community Hall in Park Road. If you are even a little intrigued, why not come and meet us, see how we operate and ask any questions before deciding if you'd like to join us. We'd love to hear from you either via email at Banstead -BVRA@Outlook.com or contact me direct on 01737 370050 / 07779 246343.

ROTARY MYTH BUSTER by Jane Illingworth (Rotary)

Rotary is for men – Wrong! Rotary has welcomed women for over 30 years. **It's for retired people** – Wrong! We are open to ages 18+. **It's for professionals** – Wrong! Diversity is our strong asset. **You must attend each week** – Wrong! We focus on what you can contribute. **It's a religious organisation** – Wrong! Rotary is non-religious and non-political. **You have to be formally dressed for meetings** – Wrong! We are interested in what you can offer. **It's a Lunch and Dinner club** – Wrong. We do have meals at most meetings, however we principally meet to plan projects etc. **Membership by invite only** – Wrong! Anyone with the right mindset can visit and join. **Interested in big international projects only** – Wrong! We are involved in these projects, however the majority of our work is within local communities supporting local causes. Please contact www.bansteadrotary.com for more information.

PLANNING MATTERS by Catalina Vassallo-Bonner

The various applications for domestic additions to property continue slowly as does tree work. We have no decisions from Surrey County Council's (SCC) application for a large building on the Bentley site to accommodate a number of flats. It was objected to by Reigate & Banstead Council (RBBC) on the grounds of "the scale, bulk and mass of the development would appear out of character with that of other developments found within the surrounding area, where buildings appear no higher than three storeys. In this case the proposed building would be six storeys in places. It is also noted at this stage that the proliferation of balconies, particularly to the principal elevation, has the potential to increase overlooking and loss of privacy, particularly to the Surrey Choices building to the east, with the scale of the building having the potential to be imposing and overbearing on this building. Finally, the amount of parking is questioned as to whether it is sufficient to meet the needs of the development's occupiers and visitors". We await further developments.

The Cricket Ground application is due to be heard by Reigate and Banstead Borough Council's (RBBC) Planning Committee in the coming months. SCC has put in another application to its own planning department for the demolition and rebuilding of Squirrels, also in the Horseshoe, as a short term break for people with a learning disability and/or autism and their families. As with Bentley, RBBC has been consulted as a consultee by SCC, as has BVRA. We have now been added to the SCC list of consultees for county applications relating to Banstead.

There is no further news from Shanley Homes on a Wellesford Close development. A brief meeting was held between Shanley and local neighbours to discuss their views. We await the outcome.

There is no news as yet from RBBC on the work commenced in February of this year with regards to a replacement for the current Local Plan. I understand there is a likelihood of a first consultation in the autumn.

TREES by Cliff Glanfield

We have made considerable progress with Surrey County Council (SCC) on tree planting this coming autumn. We have identified about 40 locations for new trees on the grass verges around the village and it looks as though these will go on the list for SCC to procure and plant as part of their Highways budget.

We have endeavoured to fill some of the gaps in the following roads: Park Road, Woodmansterne Lane, Fiddicroft Avenue, Longcroft Avenue, Commonfield Road, Lambert Road, Palmersfield Road, Greenhayes Avenue, Castleton Drive, Kingsley Avenue, Oakley Gardens and Harbourfield Road and the High Street.

Once utilities searches have been completed and locations confirmed, we will need volunteers for watering during the first 2-3 summers, or generally in dry periods and we will canvass nearby residents in this regard. If anyone in these roads would like to volunteer now, please contact Cliff Glanfield on cliff.glanfield@yahoo.co.uk.

There is scope for a lot more tree planting in future around some of the other roads and avenues and probably space to plant maybe 300 trees eventually. This may take a few years though.

Depending on the uptake in tree planting, SCC may have some budget left for stump grinding, as there are still a few around the village, but we will see towards the end of the year.



The BVRA Newsheet is supported by;

Richard Saunders and Company

2 High Street Banstead SM7 2LJ

SALES 01737 363333 LETTINGS 01737 370700

CELEBRITY COMES TO BANSTEAD by Diana Beck (Horticultural Society)

Banstead Horticultural Society have been busy planning their 2024 Programme. Following their recent successes with Gardener's question time, and Pippa Greenwood, they have managed to secure **Charlie Dimmock** for Saturday 24th February at 2pm at the really convenient Community Hall. Charlie is a bright, personable and enjoyable speaker and tickets will be sold in advance with an early bird offer for members. So, save the date to cheer up a February weekend, and watch out for more details nearer the time: in the library, on our website and at shows. The full Programme is now available on line and paper copies at shows and other meetings.



Our next Flower show is on the **Saturday 4th November** and whilst there is still plenty of horticultural achievement on display it is also an opportunity to celebrate our members crafting and artistic abilities. The Society has over 90 years of reputable experience in putting on Flower Shows in Banstead, and it is a lovely traditional way to spend a Saturday afternoon enjoying the range and expertise that goes into exhibiting. We also welcome contributions from young people (from 3 years to 16) which gives them an interest in either craft projects or of growing in a healthy outside environment (see the website for more) of course whilst there you can enjoy our famous teas and cakes. Entry to the public £2. Website details: bansteadhorticulturalsociety.com

HERE IT IS, AT LAST! by Marion Hayns (BViB)



After a few last minute hiccups, our newly restored play park was, at last, formally opened on June 10th which turned out to be one of the hottest days in the year so far. As a consequence, most families headed for the beach that day, and the ice-cream vendor I tracked down in lieu of the lack of refreshments on offer due to the continued closure of Pistachios, sadly soon departed back to Epsom Downs in search of a more lucrative sales spot!

However, we are most grateful to Octavia Lonergan, our celebrated local children's author for her support and endorsement of the importance of outdoor play areas, such as these, to our children's physical and mental well being. Our popular local Councillor Eddy Humphreys (Mayor), (as you've never seen him before!) who has contributed so much to the Village during his years in office, together with his wife

Sarah, spent the time chatting to local residents. They arrived having already taken in a tour around the Village, popping in to visit seven beautiful local gardens opened that weekend in aid of various charities dear to their owners' hearts. You will read more about this overleaf.

At the time of writing, we are still awaiting the installation of the new and replacement benches in the High Street together with the two brightly coloured ones to be placed in the scooter park area but hopefully, the new gym equipment for older teenagers will be in place on Chucks Meadow soon.



BANSTEAD FLOWER CLUB NEWS by Vicki Hollands

The last few months for the Flower Club has, as always, been a busy one. In early May, several ladies from the club travelled by coach for the day to visit the Nafas National Show at Gloucester Cathedral. Five of our club members took part in the show and we were thrilled when our very own Yan Skates was awarded second for his beautiful exhibit in the class entitled 'Fanfare'.

Our May club day began with a coffee morning for our new members and a workshop attended by several of our ladies, who produced some gorgeous floral handbags under the guidance of Rosemary Udoh. Signature Living kindly provided us with rose decorated cupcakes prior to our demonstration, and were enjoyed whilst perusing and purchasing plants at our Annual Plant Sale, all generously donated by our members.

In June, Banstead were celebrating again as Yan Skates gained 1st place in the Intersociety Class at Bookham Flower Festival and Pamela Askew was awarded 2nd in the Necklace Class. Not to be outdone, Sunne Larsen Walsh, another of our members, swept the board at Chipstead Flower Festival achieving several 1st in class amongst other awards.

Below, a selection of Floral Handbags made at our workshop in May.

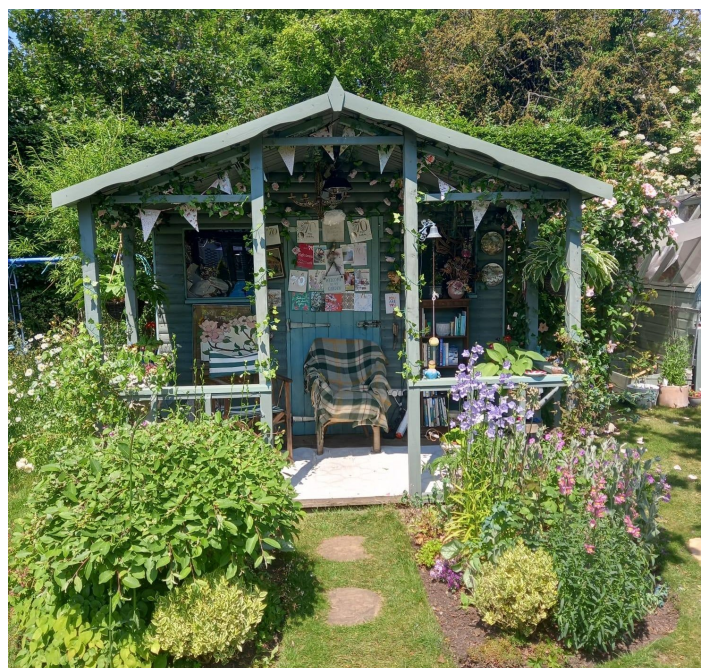


BANSTEAD VILLAGE IN BLOOM'S SECOND OPEN GARDENS WEEKEND by Kerry Garner (BVIB)

The second Open Gardens Trail took place in June this year. With eleven gardens on the trail and over 260 visitors, including our councillor Eddy Humphreys (Mayor), we raised £2,125 for various charities over the course of the weekend.

Four of the gardens offered tea, coffee and cake, and some had plants for sale. Over £1,600 was donated to Banstead Age Concern from ticket and cake sales.

We hope to have enough participants to have a third Banstead Garden Trail next year - please put the dates in your diary, 8th & 9th June 2024. Please do consider being part of the trail - it's great fun to participate in, and without gardens there will not be a third Open Gardens weekend. Please contact Kerry Garner, if you would like to be part of it, on bvib@outlook.com.



NEW 20 MPH SPEED LIMIT IN WINKWORTH ROAD - ACCESS ROADS by Brian Ransom

Surrey County Council Highways Department has agreed to install a new 20 mph speed limit in the Winkworth Road access roads and surrounding area. After some delay, work started in early June. Immediately, this project was blighted by errors. Implementation began before all the new signs were ready and there has been a failure in communication and understanding of the plan between SCC Highways Department and their contractor.

Some entryways had the new 20 mph signs but others are missing theirs and some old signs have been repositioned in error! One entryway to the access road not only had the wrong speed limit shown but two incorrect speed limits signs were mounted either side of the opening.

It beggars belief that anyone would leave these signs as they are! Confused? We residents certainly are!

Our local SCC Councillor, Mr. Luke Bennett, has intervened on our behalf to try and resolve the issue.

SCC were aware of the problems and agreed to an on-site meeting where the issues were discussed. The signs will be lowered and positioned 2.1 m from the highway, NOT measured from the top of the grass verge and signs will be better positioned to face vehicles entering the access roads. As the Commonfield Road and Salisbury Road areas are also part of the overall speed reduction scheme, large 20mph roundels will be painted on the roads at the main junctions with Winkworth Road, with repeater roundels also painted within the access roads.



This will be a major improvement to safety in the area, no driver will have an excuse for exceeding the speed limit in those areas. At the present time, many drivers using the access roads do not respect the speed limit, especially the queue jumpers during peak hours! Almost all residents have had near misses when exiting their own driveways, many have had accidents and collisions when doing so, and of course we have had some very serious ones, fortunately we have had no fatalities so far.

Hopefully, this improvement to our safety will be implemented as soon as possible.

BANSTEAD VILLAGE IN BLOOM VOLUNTEERS NEEDED by Kerry Garner (BViB)

If you want to do something for your community, you may like to think about joining Banstead Village in Bloom. We are always looking for volunteers to water our planting in the High Street, carry out maintenance jobs and fix and make things. Our gardening group meets every Friday morning, it's a very sociable group and we always need more help. You don't need to be a gardener, however - you can help tidy up, leaflet, put up posters, paint or do some administration. There's litter picking too (our group meets on Monday mornings for a couple of hours). Maybe you would like to lead a weekend litter picking group? If you want to be more hands-on with decisions, there's also the opportunity to come along and join our committee. Please contact Kerry Garner on bvib@outlook.com if you would like to help us. Banstead Village in Bloom's AGM is Tuesday 21st November 2023 at 2pm, in the Mead Room, at the Community Hall Park Road.

ROAD STEWARDS by David Talbot

Huge thanks to all our road stewards who deliver our newsheets and collect our subscriptions.

We currently have vacancies in the following roads: Forge Steading, High Street (north side), The Oval, Wingfield Court and Yewlands Close.

Please contact us (email address on the front cover) if you can help – you meet some very nice people.

BANSTEAD COMMUNITY DIG PROJECT UPDATE (PLATEAU) by James Crouch

We are into our third full season of digging small (50 x 50cm) test pits in the village in order to discover how Banstead evolved over the centuries. This season we have been mostly focusing on the Court Road area, in the vicinity of the medieval manorial court complex. This would have consisted of a manor house and various outbuildings.

Unpublished excavations took place in 1973, which found traces of the manor house on the site where the vicarage now stands. We are trying to establish the full extent of this complex and learn more about the buildings there and the people who lived and worked there. In addition to several of our usual small test pits, we have very kindly been given the opportunity for some larger investigations and this photograph shows a 1x3m trench that was being excavated at the time of writing.



If you'd like to see what we can find out about the story of the land on which your house stands with a 50cm test pit, or if you'd like to get involved in the project, then please do get in touch with James Crouch on 01737 361541 or at james.crouch@btconnect.com.

ANNUAL SUBSCRIPTIONS by David Talbot

Many thanks to all our members who are increasingly paying the annual subscriptions via bank standing orders (just like many other bills that you may have). This helps our road stewards.

Please help us by setting-up a standing order (just like many of your other bills). If you are familiar with internet banking the details are as follows.

- The payments are set to repeat on a yearly basis.
- The reference is completed with your address (abbreviated where necessary) - **really important**, so we know the address for which you are paying.
- Our bank details are as follows: Sort Code: **30-98-90**, Account Number: **16716560**
- Account Name: **Banstead Village Residents Assn 2**

If you would prefer a form to send to your bank, please see our website or send us an email.

We are happy to take applications from local residents who are outside the village, but would have to ask for the postage costs in addition to the subscription.

Our annual subscription amount is: £3.00 raising to £5.00 from next April as agreed at our AGM.

USEFUL CONTACT DETAILS

BVRA EXECUTIVE COMMITTEE

David Talbot - Chairman and Treasurer
Catalina Vassallo-Bonner – Planning and Secretary
Cliff Glanfield - Data Records Manager

Ben Martin, Brian Ransom, David Chauncey, Melanie Ramsay, Razya and Aman Kirmani, Richard Heath, Sally Hull and Sheila Cox.

Group email: Banstead-BVRA@outlook.com

LOCAL COUNCILLORS

Luke Bennett – Surrey County Councillor
email: luke.bennett@surreycc.gov.uk

Nadean Moses - Borough Councillor
email: Cllr.Moses@reigate-banstead.gov.uk

Eddy Humphreys – Borough Councillor (Mayor)
email: Cllr.Humphreys@reigate-banstead.gov.uk

Sam Walsh – Borough Councillor
email: Cllr.Walsh@reigate-banstead.gov.uk

MEMBER OF PARLIAMENT

Crispin Blunt, M.P.

Westminster Office: 0207 219 2254

email: crispinbluntmp@parliament.uk

Constituency Office: 01737 222756 Skinner House,
38-40 Bell Street, Reigate RH2 7BA

FUTURE EVENTS

BANSTEAD ROYAL BRITISH LEGION by Mike Sawyer (BRBL)



Our Veterans' hub has had a good start with over 20 people coming to each of the first two meetings. More are welcome to these events which are at the Banstead Community Centre on the last Wednesday of each month, 10.30 to 2.00 pm, lunch included. More are welcome so please spread the word.

This year's Remembrance Parade will be held on **Sunday 12th November**, starting at 10:30 from the library as usual. We hope to see you all there or at the War Memorial as usual. Volunteers to assist with marshalling, under the guidance of the Council, are needed so please let me know if you can help.

Next year is the centenary of our Banstead and District Branch, so plans are being made for a celebration around next May. We had hoped to have our original Standard refurbished for this event but it is in a very sorry state and we are told this would cost several thousand pounds to repair. Sadly, this is likely to be beyond our financial resources unless we can get donations and/or sponsorship to help us.

Any help with any of these items please email nms.brbl@virginmedia.com or to timsnuggs1@gmail.com

BANSTEAD ARTS FESTIVAL SOCIETY by Jeff Young (BAFS)

Saturday, 14th October 2023, O Duo - Owen Gunnell & Toby Kearney, percussion - O Duo have been captivating audiences for over 20 years. Their programme ranges from the Baroque to the present day, including works by Liszt, Shostakovich, Maxwell Davies and Glass.

Saturday, 18th November 2023 - Ignas Maknickas, piano - An exceptional young pianist, Ignas Maknickas received 'The Queen's Commendation for Excellence' at the Royal Academy of Music in July 21. The concert will include works by Schubert, Bortkewicz and Chopin.

All concerts will be at 7:30pm in the Community Hall, Park Road, Banstead SM7 3AJ. Adults: £20 and school pupils: free. Further details and Box Office information see www.bansteadarts.org.uk

OTHER EVENTS by David Talbot

Wednesday 4th October - Chipstead Arts - Tyler Butterworth: 'A Bit of a Carry On'

Friday 6th October - BHS - Ben Pope: 'Gardening to Save Time'

Saturday 7th October at 9:30 AM - Banstead Combined Charities - Christmas Fair

Saturday 7th October - St Cecilia's Chorus - Quiz Evening - Banstead County Junior School, The Horseshoe

Saturday 14th October - BAFS - O Duo - Owen Gunnell and Toby Kearney

Wednesday 18th October at 2:30PM - U3A - AGM

Saturday 21st October - Chipstead Arts - Lara Thrap: 'Pots, Pictures and Porcelain'

Monday 23rd October - Curzon Cinema - 'The Unlikely Pilgrimage of Harold Fry'

Wednesday 25th October at 2:00 PM - Flower Club - Lorraine Saunders: 'Magic Moments'

Thursday 26th to Saturday 28th October - Banstead Art Group - Annual Exhibition

Saturday 4th November at 2:00 PM - BHS - Late Autumn Flower Show

Saturday 4th November - Cricket Club - Fireworks - Cricket ground

Saturday 11th November at 7:15 PM - Banstead Village in Bloom - Quiz Night

Sunday 12th November at 10:15 AM - RBL - Remembrance Day parade - High Street

Weds 15th to Sat 18th November - SADC - Agatha Christie's 'The Unexpected Guest' - Adrian Mann Theatre

Wednesday 29th November at 2:30 PM - U3A - Susan Purcell: 'The Story of Crosswords'

Events are planned for the Community Hall, Park Road, Banstead, unless otherwise stated. Please see our website for further details.